

# Facilitating Equitable Access to Palliative and End-Of-Life Care for Underserved Populations in British Columbia: Knowledge Exchange Series (2025)

## Insights Specific to:

Justice-Involved Individuals  
Living with a  
Life-Limiting Illness



## How to Cite this Document

BC Centre for Palliative Care. (2025). Facilitating Equitable Access to Palliative and End-of-Life Care for Underserved Populations in British Columbia: Knowledge Exchange Series (2025). Insights specific to: Justice-involved Individuals Living with a Life-limiting Illness.

**Copyright** © BC Centre for Palliative Care. 2025.

**This document is available for public use under Creative Commons Copyright License: Attribution-NonCommercial-NoDerivatives 4.0 International (CC BY-NC-ND 4.0).**

Under this license, users can download, display, print, or share this resource with others, without modification, for personal, educational and non-commercial use only and all copyright and other proprietary notices are retained. Under no circumstances may any of the information included in this resource be otherwise reproduced, republished or re-disseminated in any other manner or form without the prior written permission of an authorized representative of the BC Centre for Palliative Care. Users are required to credit the BC Centre for Palliative Care.

## For More Information

For more information about this report, please communicate with:

Rachel Carter, PhD  
Director of Research  
BC Centre for Palliative Care  
Email: [rcarter@bc-cpc.ca](mailto:rcarter@bc-cpc.ca)

Eman Hassan MD, MPH  
Executive Director  
BC Centre for Palliative Care  
Email: [ehassan@bc-cpc.ca](mailto:ehassan@bc-cpc.ca)

## Knowledge Exchange Overview

In Spring 2025, the BC Centre for Palliative Care on behalf of the BC Palliative Care Research Collaborative hosted a three-part virtual **Knowledge Exchange Series** on *facilitating equitable access to palliative and end-of-life care for underserved populations in BC*.

Shaped by research, expert insights, and lived experiences, the series aimed to advance an equity-informed approach to palliative care by sharing stories, highlighting promising practices, strengthening connections between health and community systems, and identifying future directions for policy, practice, and research.

Discussions and activities focused on twelve underserved population groups with limited access to essential palliative and end-of life care services.

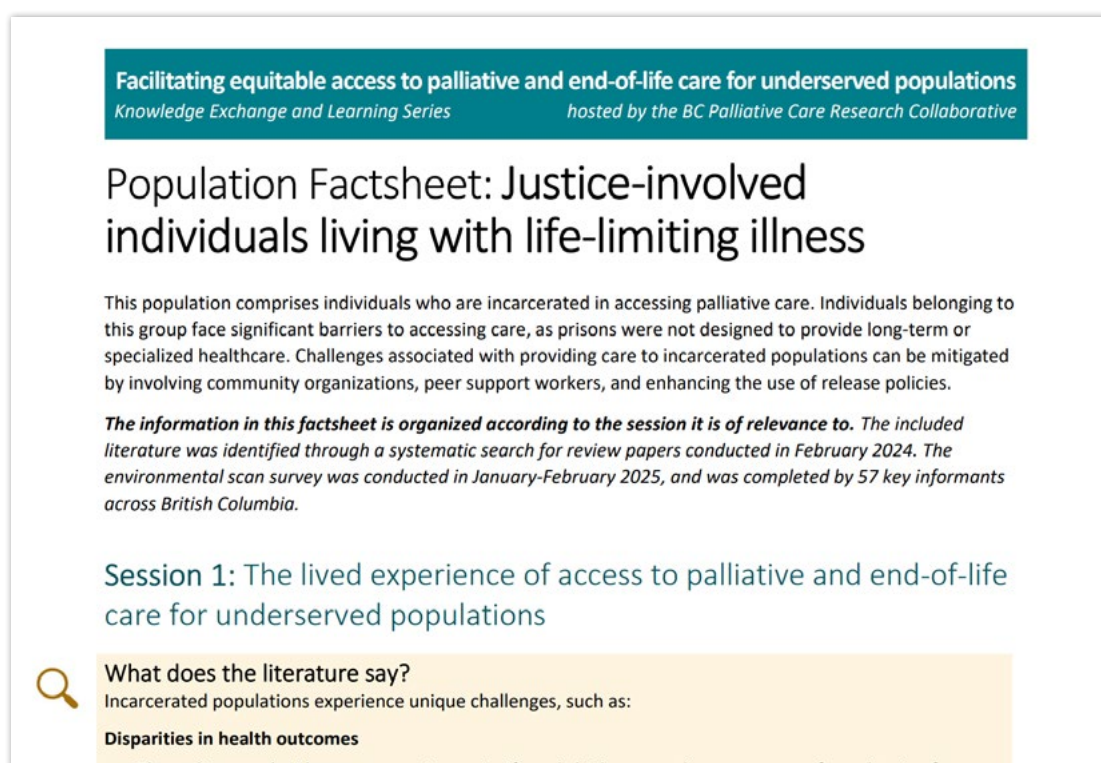
Read the full **Summary Report** [here](#).

## Insights Specific to Justice-Involved Individuals Living with a Life-limiting Illness

### Insights from the Literature and Key Informants

To inform discussions about **justice-involved individuals living with a life-limiting illness** during the Knowledge Exchange sessions, a population fact sheet was developed. The fact sheet summarizes key themes from a literature review and insights gathered from key informants through an online survey—highlighting experiences, opportunities, facilitators, and barriers to care.

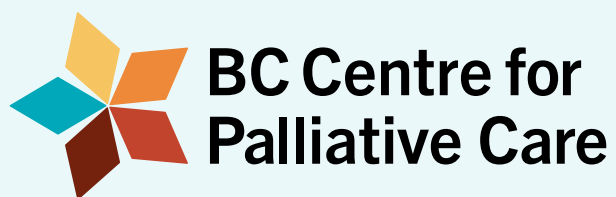
View the **population fact sheet** [here](#). A preview is shown below.



## Insights from the Knowledge Exchange Series

Due to limited capacity and participants' focus on other populations, the experiences of this group in accessing palliative care were not discussed during the Knowledge Exchange Series. As a result, no insights specific to this population are available.

**For similar insights on other underserved populations, visit the BC Centre for Palliative Care website [here](#).**



---

Advancing palliative care through best practices, innovation and collaboration.

[www.bc-cpc.ca](http://www.bc-cpc.ca)

