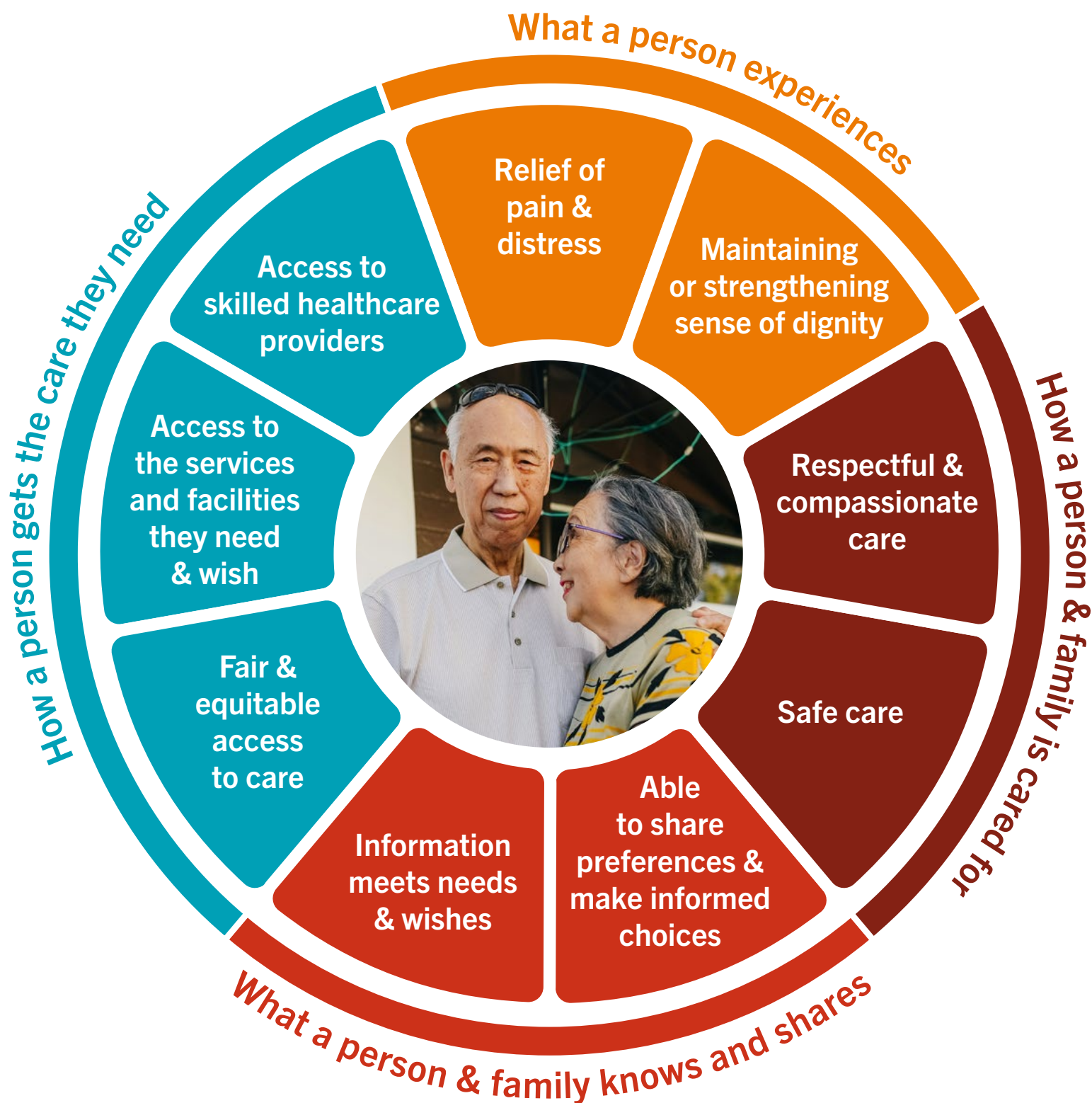


Person & Family-Centred Outcomes of Palliative Care in BC

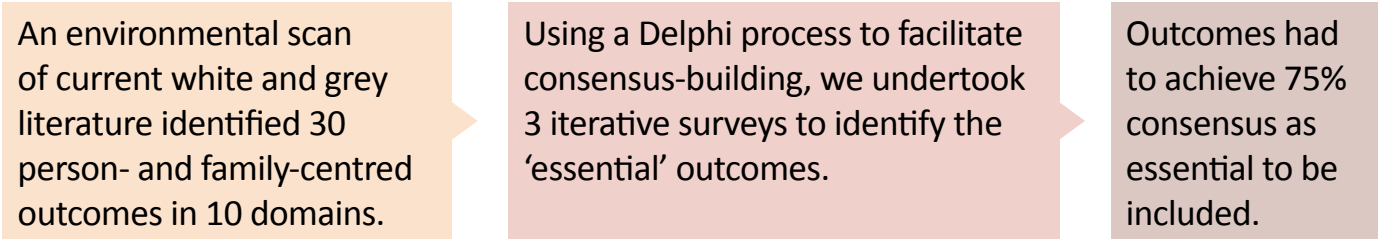
Informed by evidence, developed by consensus (2025)



In 2024, BC Centre for Palliative Care convened an expert advisory panel of BC regional and provincial health authorities, along with healthcare providers, researchers and people with lived experience to develop recommendations for measuring palliative care outcomes in BC. This is in response to Health Canada’s Framework on Palliative Care in Canada (2018), which identified developing and standardizing person- and family-reported outcomes and experience measures as one of its four priorities for action.

Phase One answered this question:
What person- and family-centred palliative care outcomes do people with lived experience and their families and healthcare providers in BC agree are the highest priority (‘Essential’) to measure?

Our method:



Essential = completely necessary to measure in order to understand quality palliative care for people and their families.

The Delphi expert panel included:



To learn more, go to: www.bc-cpc.ca/palliative-quality-outcomes